

Port Management

The national park of Port-Cros manages the harbour, the hulks and the organized mooring.

The harbour is exposed to the mistral and is dangerous during winds superior to force 7.

Functioning :

Harbour master's office : opened all year
8 :30 a.m. - 12 a.m. ; 4 p.m. - 6:30 p.m.

VHF 9/16

Phone +33 (0)4 94 01 40 72
capitainerie@portcros-parcnational.fr

Services :

Fresh water 20 l/day and per vessel
(at the tap from 6 p.m to 9 p.m)
2 water sources : 1 restroom area at the harbourmaster's office and 1 at the end of the hulks
Dishwashing area at the end of the hulk
Waste sorting premises
No fuel ; no electricity ; no shower

Operation of the harbour of Port-Cros :

Free access and mooring from 9:00 a.m. to 6:00 p.m.
Port tax for the evening to be paid at the harbourmaster's office upon your arrival
Harbour prohibited to vessels >15 m, except at the stone quay, which is accessible to vessels >15 m and <30 m by reservation.

Probes (zero of nautical charts) at hulks :

Hulk C		Hulk B		Hulk A	
< Vessels of more than 12m >		< Vessels of less than 12m >		>	
Probes	Place	Place	Probes	Probes	Place
2,50	1	2	2,25	2,50	75
	3	4			74
	5	6			73
2,00	7	8			72
	9	10	2,00		71
	11	12			70
2,00	13	14		2,25	69
	15	16	2,00	2,00	68
1,90	17	18	2,00		67
	19	20			66
	21	22			65
1,60	23	24	2,00	2,00	64
	25	26			63
	27	28		1,90	62
	29	30	1,90		61
	31	32			60
	33	34	1,70		59
	35	36		1,75	58
	37	38			57
1,60	39	40	1,50		56
1,40	41	42	1,40	1,30	55
1,25	43	44	1,25		54
	45	46			53
	47	48			52
	49	50			51

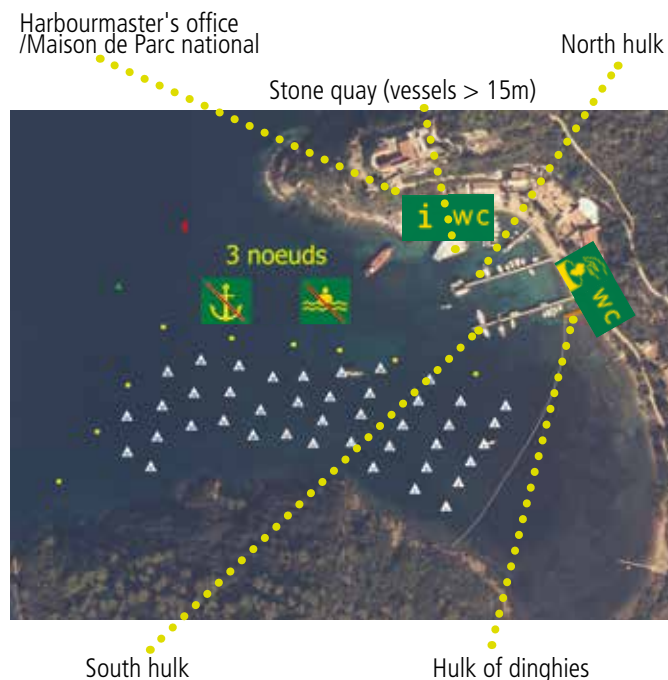
Berth is done with dangles ("seaside" dangle)

Probe at stone quay : 2,40 m

Mooring alongside another vessel on buoys is not allowed.

Reminder : depth = probe + water height

Plan of the harbour :



Maximum length from vessels to buoys

Buoys # 1 to 11 : 10 meters

Buoys # 12 to 42 : 15 meters

Reminders :

Are prohibited in the harbour :



Swimming Noise BBQ

Operation of a power generator

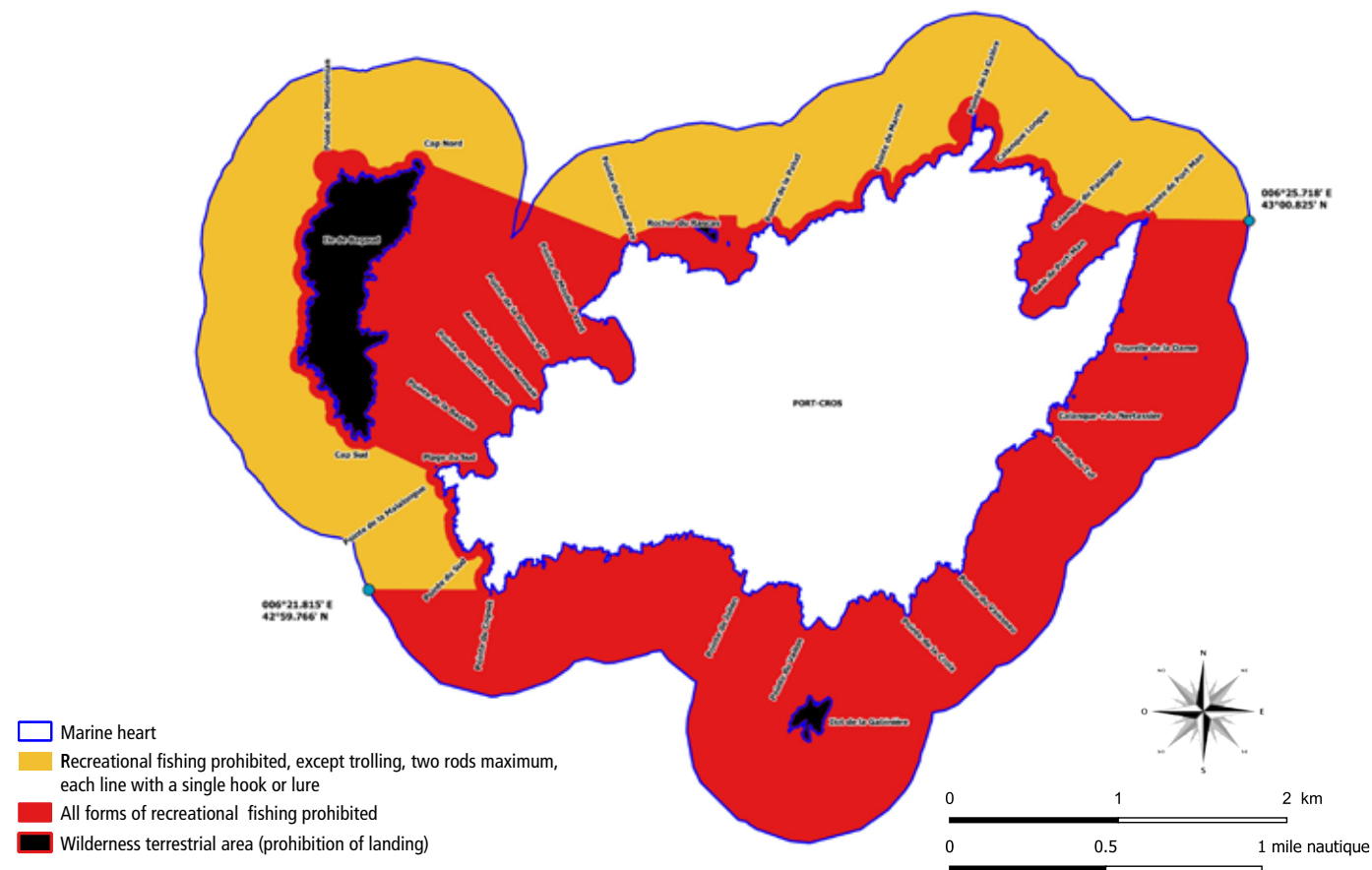
Are prohibited in the national park :



Drone PWC (water scooters) Hauled buoys Feeding of animals

Leisure fishing around Port-Cros

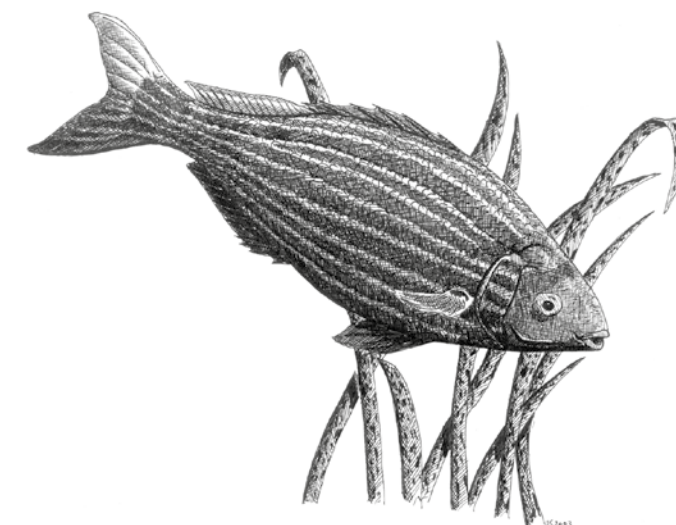
Regulation of recreational sea fishing around Port-Cros island
Prefectoral order # 2004-731 of June 30th 2004
Prefectoral order n°2013354-0001 of December 20th 2013
Interprefectoral order n°039/2020 of March 24th 2020



Recreational fishing is regulated. Visit the website www.portcrosparcnational.fr to know the times, areas and practices that are authorized.

Sparefishing is prohibited.

Professional fishing is regulated and subordinated with the yearly signature of a partnership charter with the national park.



Saupe (S.Uriet)

Numerous marine animals live in the rocks or in the posidonia meadow. Observe them without disturbing them !