

## Regulation of the national park

The island of Port-Cros is classified “coeur de parc” (heart of park), the access of dogs is regulated.

It is not allowed to pull boats ashore.


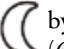




For more information regarding the land and marine regulation:  
[www.portcrosparcnational.fr](http://www.portcrosparcnational.fr)  
[police@portcros-parcnational.fr](mailto:police@portcros-parcnational.fr)



Maison de parc national:  
83400 Port-Cros  
Phone : +33 (0)4 94 01 40 70

Head office:  
Parc national de Port-Cros  
181, Allée du Castel Sainte Claire  
BP 70220  
83406 Hyères cedex  
Phone: +33 (0)4 94 12 82 30  
Fax: +33 (0)4 94 12 82 31  
Email: [accueil.pnpc@portcros-parcnational.fr](mailto:accueil.pnpc@portcros-parcnational.fr)  
[www.portcrosparcnational.fr](http://www.portcrosparcnational.fr)

## Regulation within the ZMEL

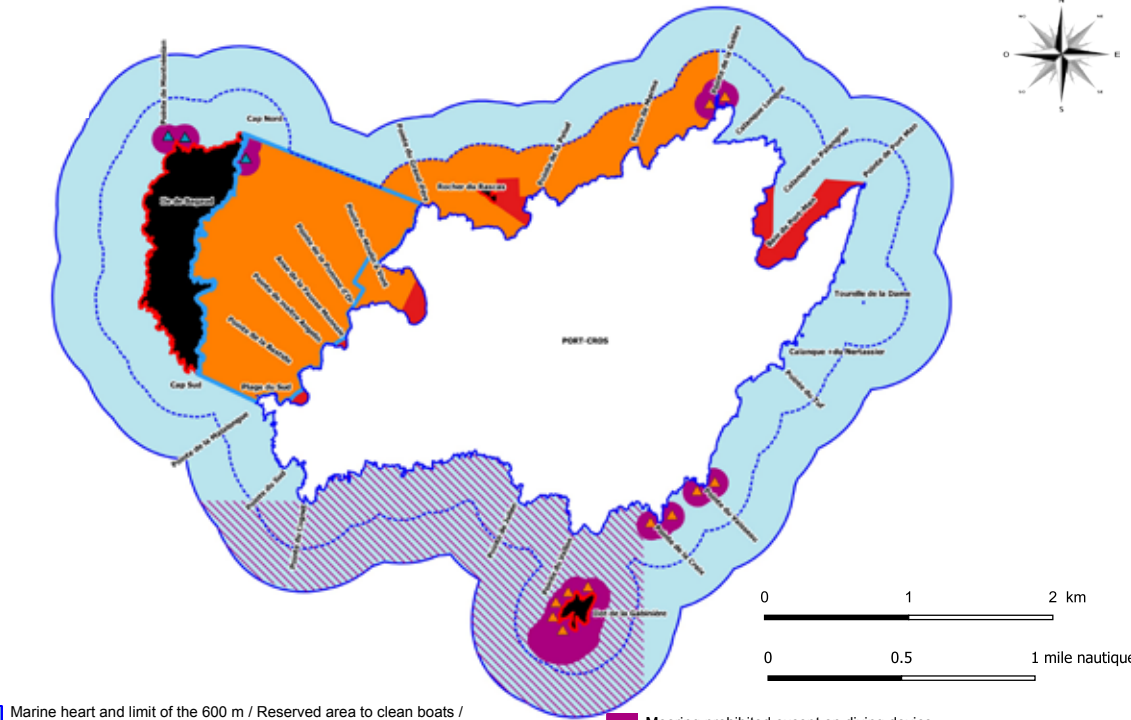
- |  |  |
|--|--|
|  Available and free of charge daytime (8 a.m. to 6 p.m.) |  Chargeable and by reservation nighttime (6 p.m. to 8 a.m.) |
|  1 buoy = 1 boat   |  68 buoys   |
|  1 person always aboard                                  |  Speed limited to 5 knots                                   |




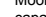

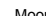






For any information:  
<http://www.portcros-parcnational.fr/fr/des-decouvertes/sejourner/la-zmel-de-bagaud>  
or by QR code

## Yachting and diving around Port-Cros

Two hulks at the plage de la Palud and plage du Sud, allow dinghies to moore for accessing beaches. A mooring buoy to share at the plage de la Palud allows to swim to the underwater trail.



- |  |  |
|--|--|
|  Marine heart and limit of the 600 m / Reserved area to clean boats / Speed limited to 12 knots / Mooring prohibited to vessels of more than 24 m / Powered watercrafts (PWC : scooter, jet-ski, etc.) and hauled devices prohibited / Autonomous scuba diving prohibited, except authorisation |  Mooring prohibited except on diving device   |
|  Limit of the 300 meters / Speed limited to 5 knots   |  Mooring devices reserved for diving. Presence of a person on board capable of maneuvering the vessel is mandatory during the busy periods from 9 am to 5 pm. |
|  Wilderness terrestrial area (prohibition of landing)   |  Mooring devices reserved for diving  |
|  Traffic and mooring prohibited   |  Diving prohibited from April 1st to September 30th   |
|  Mooring prohibited   |  ZMEL (Mooring and Light Equipment Area) 68 mooring buoys from April 15th to October 15th   |

Mooring of vessels of more than 24 m prohibited

Powered watercrafts (PWC : scooter, jet-ski, etc.) and hauled devices prohibited

For the safety of users of the marine environment, mooring is regulated and speed limited to:

- 12 knots between 300 and 600 meters from the coasts,
- 5 knots in the area of 300 meters and in the ZMEL (Mooring and Light Equipment Area)
- 3 knots in the harbour

On the whole coastal fringe of the island of Port-Cros and the islets of Bagaud, Gabinière and Rascas, it is prohibited, except for imperative security reasons, to ground any watercraft or moore outside the mooring rings provided for this use, with the help of a lanyard or an anchor, on the terrestrial part. In addition, on islets, disembarkation is prohibited on the dock provided for this purpose.

From June 15th to September 15th, traffic outside marked trails is prohibited on the entire terrestrial territory of the national park.

By order of the maritime Prefect, only the mooring of vessels equipped with holding tanks in the waters of Port-Cros is allowed. Pleasure boaters are therefore invited to equip their boat according to the applicable standards.

- > Anchorage within the ZMEL (Mooring and Light Equipment Area) is prohibited at all times. Mooring is possible there from April 15th to October 15th on devices provided for this use.
- > Aboard, avoid the use of domestic detergents: resort to biodegradable detergents.
- > Ensure to not discharge your used waters at sea : think about the marine life and the coastline's plants. Any form of discharge is prohibited in the waters of the national park.
- > Noises and disturbances of nature to disrupt the tranquility of the sites are prohibited.

## Scuba diving around Port-Cros

Scuba diving in a scuba diving suit in the waters of the Port-Cros National Park is prohibited except for holders of a diving authorization. To obtain this authorization, each individual diver or each diving establishment must now register online on the CaPeL website (Online Dive Log) <https://capel.portcros-parcnational.fr/> This website allows him to sign the rules and transmit his diving data. In-person verification in the National Park houses remains necessary in order to obtain the "diving" sticker that is required to be affixed on the boat.



The diving regulation stipulates a limitation to 40 divers simultaneously per site and prescribes respectful behaviors of the habitats and species. It enforces in particular to not :

- feed fishes: they must stay wild
- flip the rocks
- get in contact with the bedrock or animal or plant species

For this reason, the learning of diving is regulated. Nighttime diving is regulated because the intensive use of underwater lighting disrupts the tranquility of fishes.

Divers, *signal yourself at the surface* with regulatory flags !

- For your safety, mooring is not authorized within a radius of 100 meters around diving sites.
- Authorized divers (individual or structure) have priority for mooring on diving buoys. Several vessels up to a limit of 3 vessels can moor there simultaneously during the time required for the dive. Mooring is prohibited for vessels over 15 meters.
- During the mooring time, the presence of a person on board able to maneuver the vessel is compulsory during the busy periods of May and June and from 9 a.m. to 5 p.m in July and August on the sites of following dives: La Gabinière, la Croix, le Vaisseau and la Galère.



# Yachting, fishing, diving around Port-Cros island and access to the harbour



A national park is a territory of exception opened to all but under one's responsibility. It is protected by a specific regulation. Thank you for respecting it.

## Port Management

The national park of Port-Cros manages the harbour, the hulks and the organized mooring.

The harbour, exposed to the mistral, is dangerous during winds superior to force 6. It is closed during winds superior to force 7.

### Functioning :

Harbour master's office : open from April 1 to October 31 at the following times :  
8 :30 a.m. - 12 a.m. ; 4 p.m. - 6:30 p.m.

### VHF 9/16

Phone +33 (0)4 94 01 40 72  
[capitainerie@portcros-parcnational.fr](mailto:capitainerie@portcros-parcnational.fr)

### Services :

Fresh water 20 l/day and per vessel  
(at the tap from 6 p.m to 9 p.m)  
2 water sources : 1 restroom area at the harbourmaster's office and 1 at the end of the hulks  
Dishwashing area at the end of the hulk  
Waste sorting premises  
No fuel ; no electricity ; no shower

### Operation of the harbour of Port-Cros :

Free access and mooring from 9:00 a.m. to 6:00 p.m.  
Port tax for the evening to be paid at the harbourmaster's office upon your arrival  
Harbour prohibited to vessels >15 m, except at the stone quay, which is accessible to vessels >15 m and <30 m by reservation.

Rates and regulations available at this address :

<http://www.portcros-parcnational.fr/fr/des-decouvertes/une-destination-dexception/la-mer-et-les-fonds-marins/le-port-de-plaisance-de-port>  
Harbour placed under video protection  
Mandatory mooring light at night on the buoys.

Probes (zero of nautical charts) at hulks :

Hulk C			Hulk B		Hulk A		
< Vessels of more than 12m >			< Vessels of less than 12m		>		
	Probes	Place	Place	Probes	Probes	Place	
Sailboats	2,50	1	2	2,25	2,50	75	Reserved "Drop-off area" Contact the harbourmaster's office (VHF 9)
		3	4			74	
		5	6			73	
	2,00	7	8			72	
		9	10	2,00		71	
		11	12			70	
	2,00	13	14		2,25	69	
		15	16	2,00	2,00	68	
	1,90	17	18	2,00		67	
		19	20			66	
Engines		21	22			65	Reserved area for residents (village side)
	1,60	23	24	2,00	2,00	64	
		25	26			63	
		27	28		1,90	62	
		29	30	1,90		61	
	1,60	31	32			60	
		33	34	1,70		59	
		35	36		1,75	58	
		37	38			57	
	1,60	39	40	1,50		56	
Beach side (Manoir)	1,40	41	42	1,40	1,30	55	
	1,25	43	44	1,25		54	
		45	46			53	
		47	48			52	
		49	50			51	

SOUTH HULK

NORTH HULK

(Probes in meters)

Berth is done with dangles ("seaside" dangle)

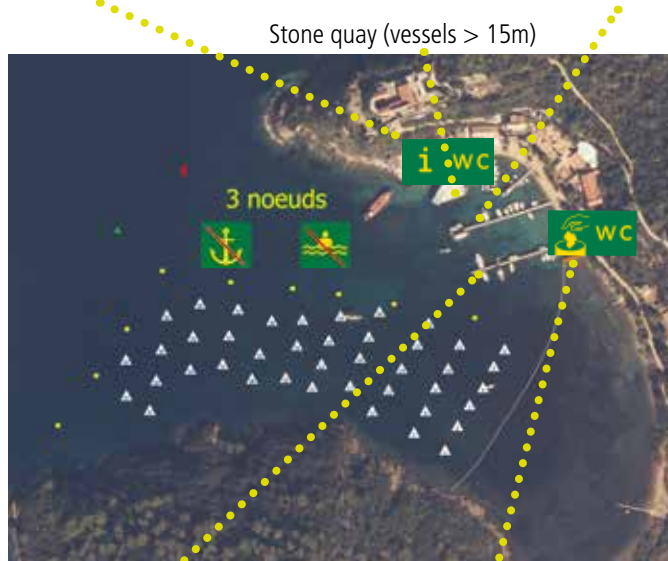
Probe at stone quay : 2,40 m

Mooring alongside another vessel on buoys is not allowed.

Reminder : depth = probe + water height

Plan of the harbour :

Harbourmaster's office  
/Maison de Parc national



South hulk

Hulk of dinghies

Maximum length from vessels to buoys

Buoys # 1 to 11: 10 meters - Draft: 1,80 m

Buoys # 12 to 42: 15 meters

### Reminders :

Are prohibited in the harbour :



Swimming



Noise



BBQ

Generator operation  
prohibited  
in the harbor cove

Are prohibited in the national park :



Drone



PWC  
(water scooters)



Hauled  
buoys



Feeding  
of animals

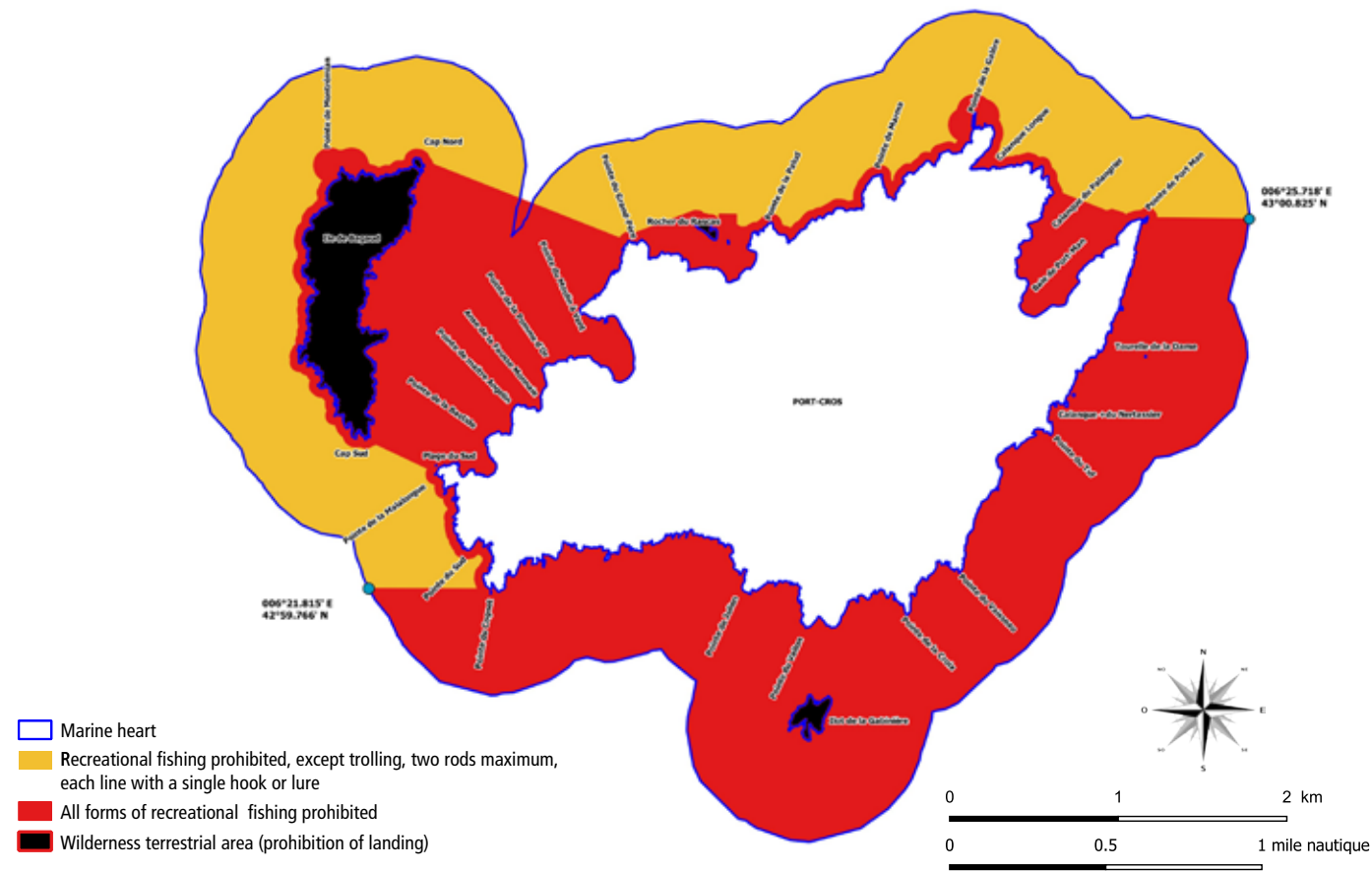
## Leisure fishing around Port-Cros

Regulation of recreational sea fishing around Port-Cros island

Prefectoral order # 2004-731 of June 30th 2004

Prefectoral order n°2013354-0001 of December 20th 2013

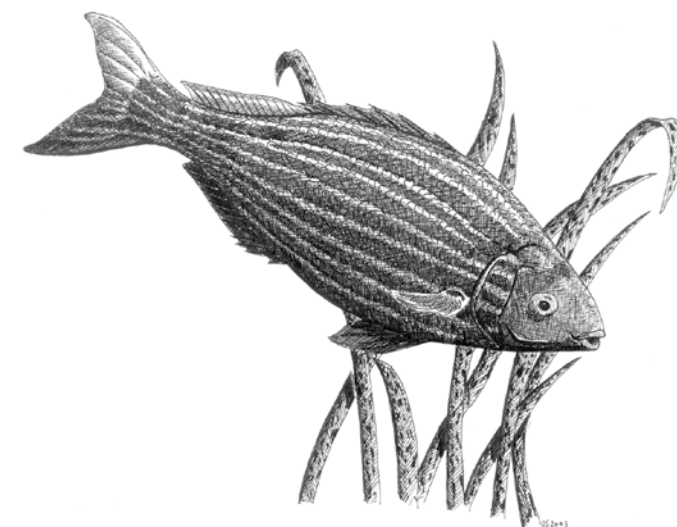
Interprefectoral order n°039/2020 of March 24th 2020



Recreational fishing is regulated. Visit the website [www.portcrosparcnational.fr](http://www.portcrosparcnational.fr) to know the times, areas and practices that are authorized.

Sparefishing is prohibited.

Professional fishing is regulated and subordinated with the yearly signature of a partnership charter with the national park.



Saupe (S.Uriot)

Numerous marine animals live in the rocks or in the posidonia meadow. Observe them without disturbing them !