

## The port of Port-Cros

Port-Cros National park manages the port, pontoons and organised mooring area.

The port is exposed to the Mistral and is dangerous during winds superior to force 7.

### Operation :

Harbour Master's office : open April-October.

- July-August : 8 a.m. to 6:45 p.m.

- April to June and September to October

8 a.m. to 13:00 a.m. and 3 p.m. to 6:30 p.m.

### VHF 9/16

Tel : +33 (0)4 94 01 40 72

[capitainerie@portcros-parcnational.fr](mailto:capitainerie@portcros-parcnational.fr)

### Services :

Freshwater limited to 20 l/day and per vessel (on tap from 6 pm to 9 pm).

2 water supply locations : 1 toilet block at the Harbour

Master's office and 1 at the end of the pontoons ;

Dishwashing block at the end of the pontoons.

Recycling bin

No fuel or gas station ; no electricity ; no showers.

### Port-Cros Harbour functioning

Free acces during day time

Port fees to be settled at the Harbour Master's office upon arrival (single tariff for pontoons/buoys).

The port is prohibited to vessels >15 m.

Unless reservation done for the Stone quay which is allowed for vessel <30m

For vessels >15m and <30m, Buoys are available outside the harbour :

- between the "pointe de la Pomme d'Or" and the "plage du Sud".

- at north side of the area "Mooring prohibited" close to Bagaud island.

## Depth at pontoons (Average depths) :

south pontoon						North pontoon					
< Vessels more than 12m >			< Vessels less than 12m >			< Vessels more than 12m >			< Vessels less than 12m >		
Depths	Place	Place	Depths	Place	Place	Depths	Place	Place	Depths	Place	Place
sailing vessels	2,50	1	2	2,50	75	sailing vessels	3,0	75	sailing vessels	3,0	74
	2,50	3	4	2,50	73		3,0	74		2,6	72
		5	6		71			73		2,7	70
	2,30	7	8	2,30	69			71		2,3	68
		9	10		67			70		2,2	65
	2,10	11	12	2,30	64			69		2,2	63
		13	14		62			67		2,3	61
	2,20	15	16	2,30	60			65		2,2	59
		17	18		58			63		2,3	57
	2,00	19	20	2,20	56			61		1,8	54
Power vessels		21	22		53	Power vessels		59	Power vessels	1,8	53
	1,80	23	24	2,00	52			57		1,3	52
		25	26		51			55			
	1,50	27	28	1,90				53			
		29	30					51			
		31	32	1,70				49			
		33	34					47			
	1,50	35	36	2,20				45			
		37	38					43			
		39	40	1,90				41			
Beach side (Manoir)		41	42			Area reserved to local boats (Village side)		39	Area reserved to local boats (Village side)		
		43	44	1,80				37			
		45	46					35			
	1,30	47	48	1,40				33			
		49	50					31			
								29			
								27			
								25			
								23			
								21			

(Depths in meters)

Moorings have to be done with dangles (dangle to be used is seaside).

Depth at stone warf : 3.00 m

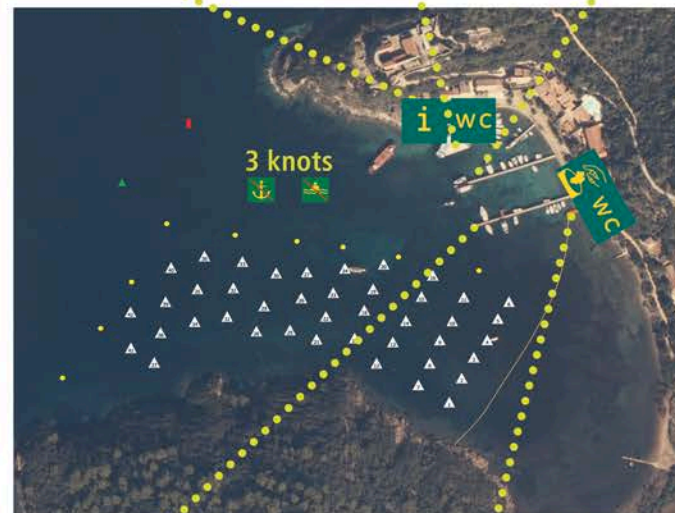
Mooring alongside another vessel is prohibited on mooring buoys.

## Map :

Harbour office/National Parc house

Stone quay (vessels > 15m)

North pontoon



South pontoon

Dinghies pontoon

Maximum length for vessels on buoys :

Buoys #1 to #11 : 10 meters

Buoys #12 to 42 : 15 meters

### Reminder :

Are prohibited in the port :



Swim



Noise



BBQ

No running generator in the harbour

Are prohibited in the national park :



Drones



Engine-driven  
nautical vehicles  
(scooters, jet skis)



Towed  
buoys



Animals  
feeding